

An aerial photograph of a large lake with several houses and docks along the shoreline. The water is calm, and the sky is clear. The houses are scattered along the coast, with some having large porches and patios. The docks are made of wood and extend into the water. The overall scene is peaceful and scenic.

# Housing Summit 2023

Pittsylvania County, VA

# Pittsylvania County

---

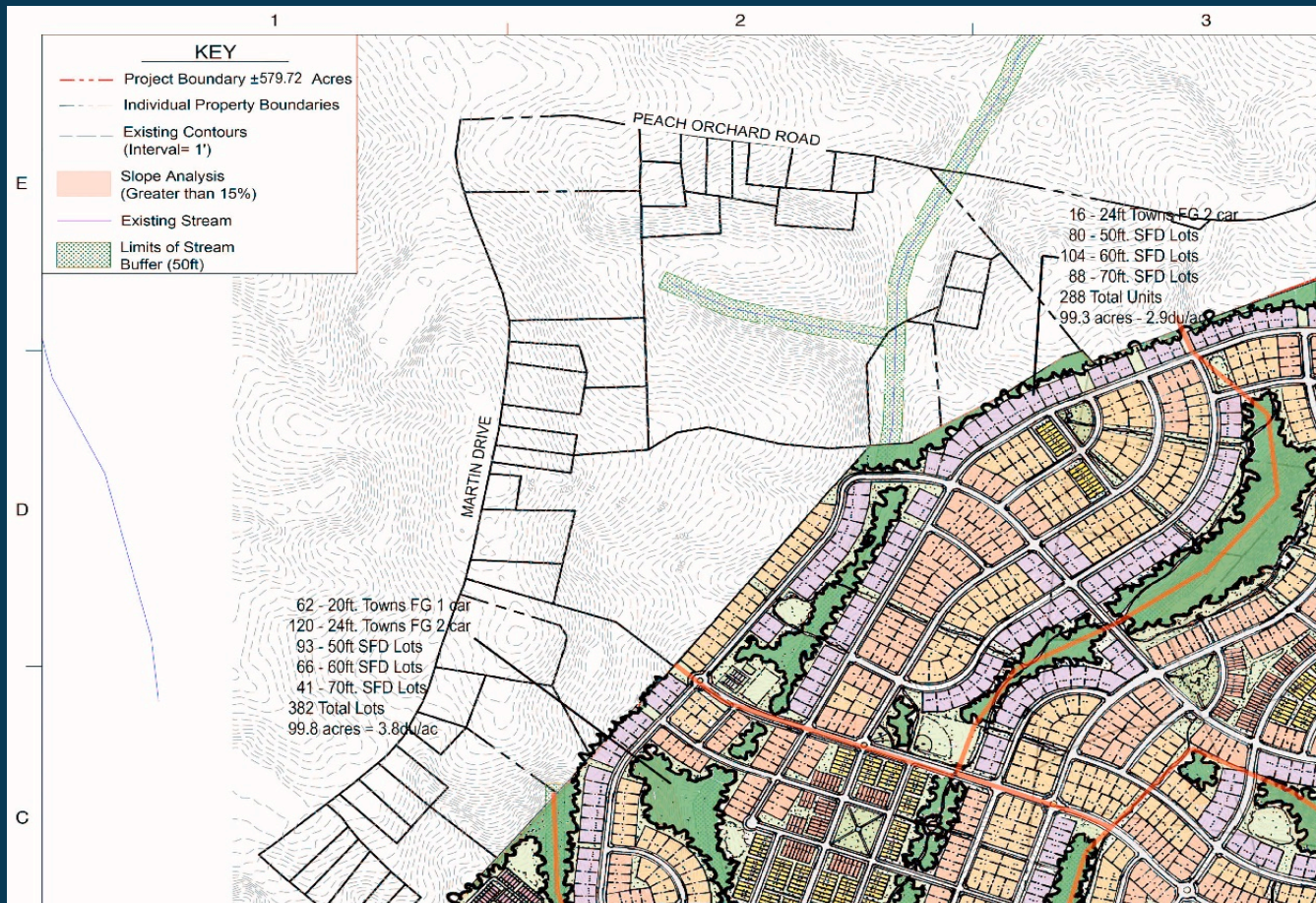
- Population: 59,952 (as of July 1, 2022)
- Population per square mile: 62.4
- Housing Units: 29,448
- Households, 2017-2021: 26,663



# Potential Future Development Areas



# Southside Investing, LLC Mixed Use Development



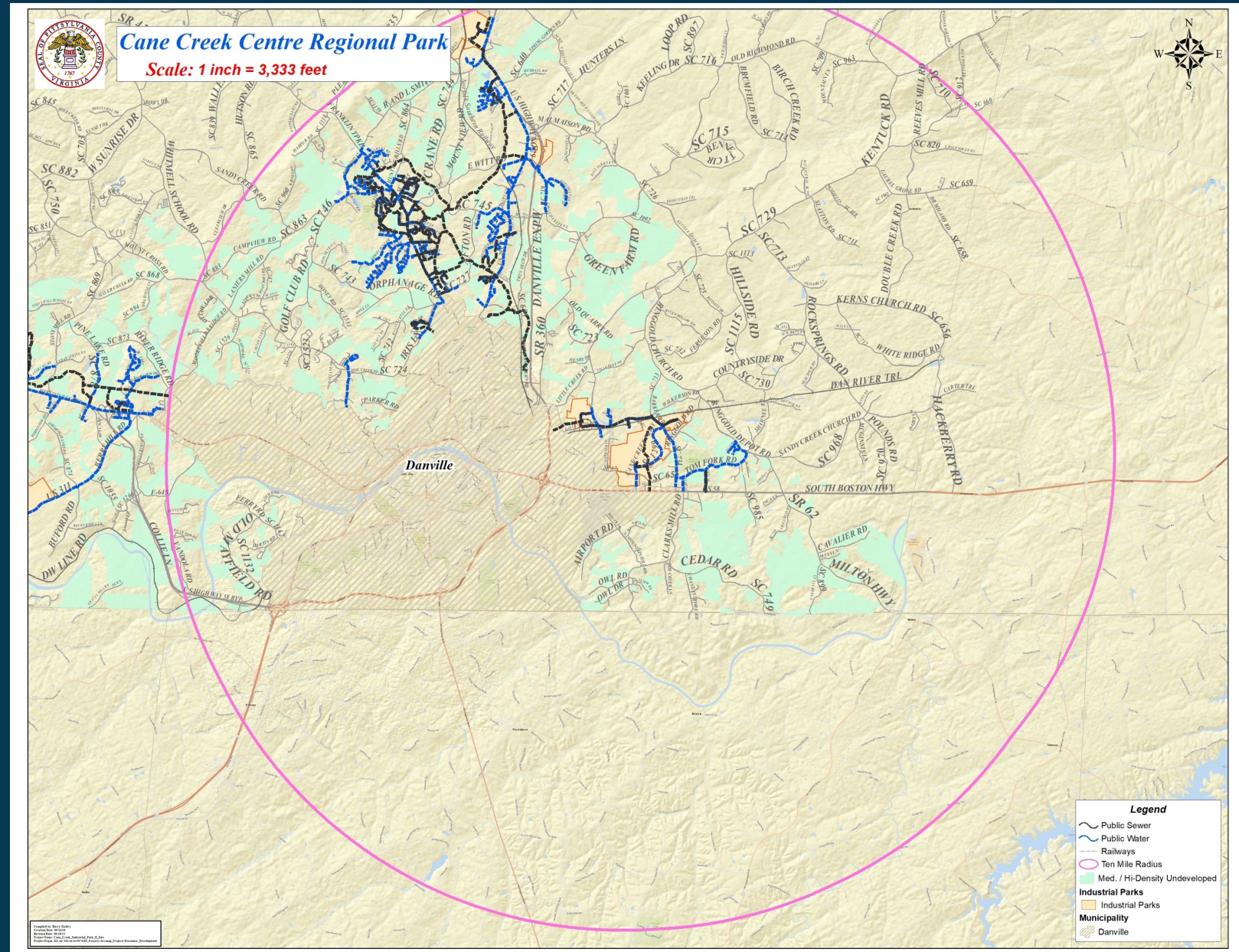
## 1838 Housing Units

- 308 Multi-Family Units
- 542 Townhomes
- 988 Single Family Detached

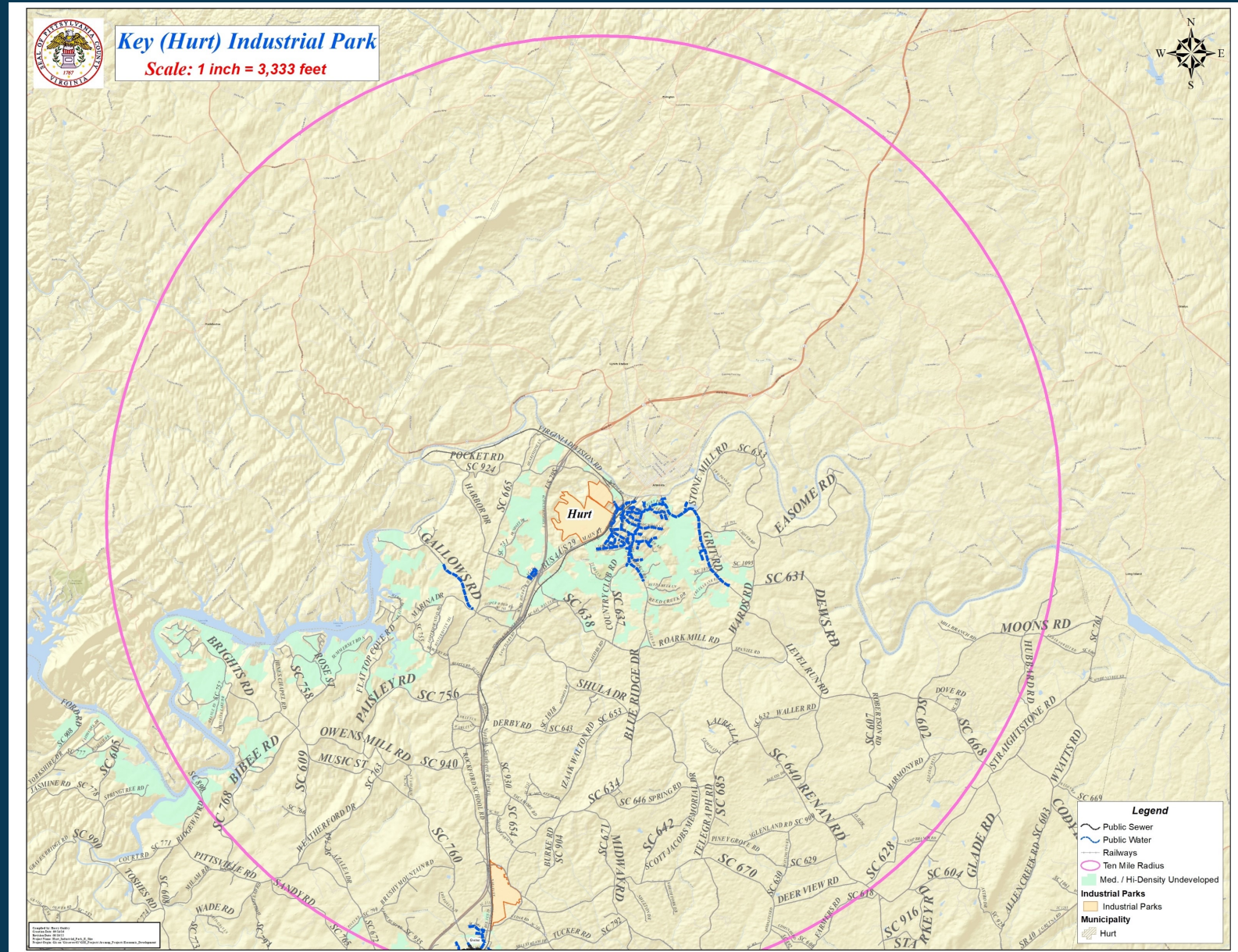
## Commercial Uses to include:

- Grocery anchored shopping center
- Restaurants
- Offices
- Assisted living/dementia care facility
- Hotel

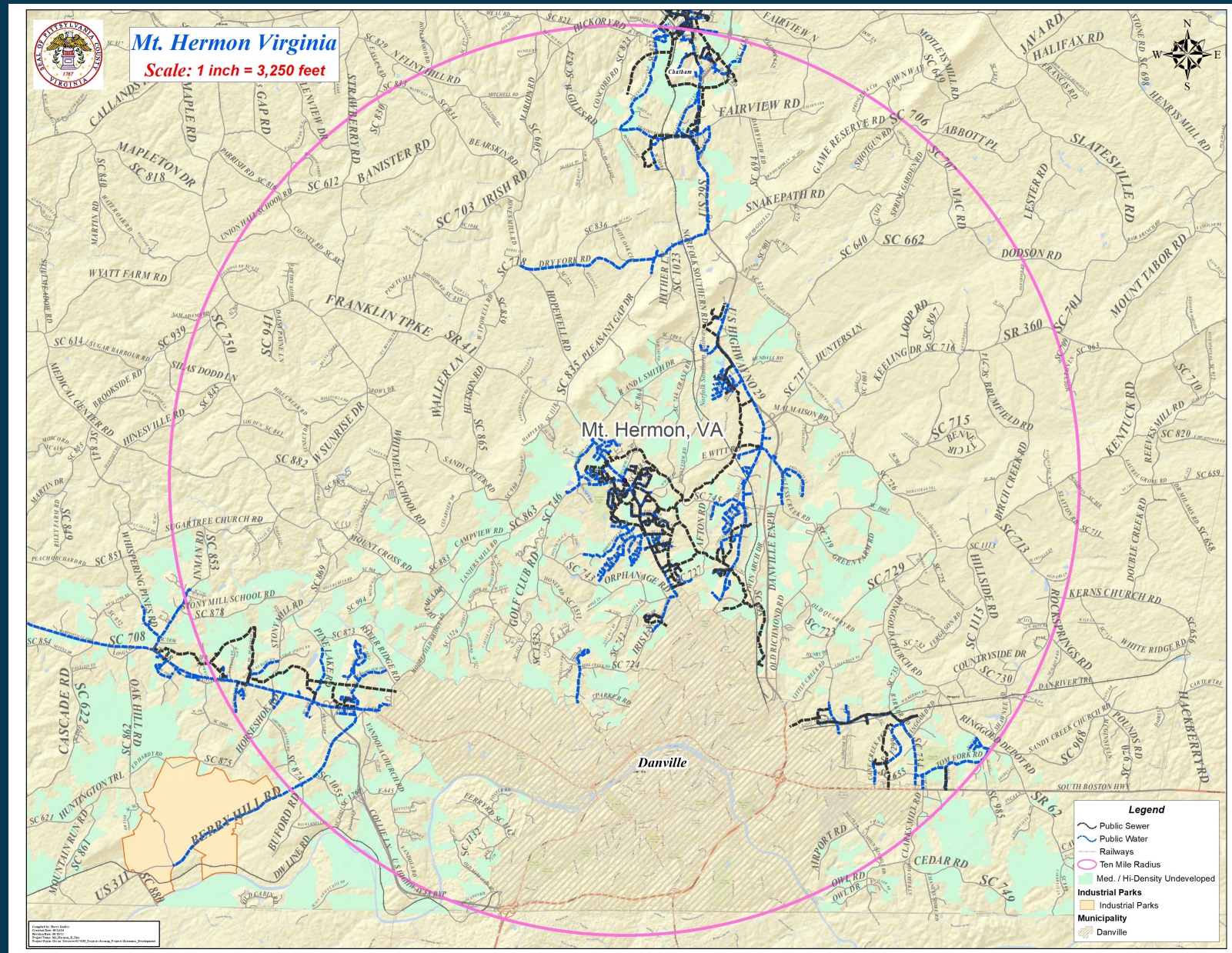
# Cane Creek Industrial Park



# Hurt Industrial Park



# Mount Hermon Community





An aerial photograph of a large lake with several houses and docks along the shoreline. The water is calm, and the surrounding area is lush with green trees. The sky is a pale, hazy blue.

# Questions?

Emily Ragsdale  
Director of Community Development  
[Emily.Ragsdale@pittgov.org](mailto:Emily.Ragsdale@pittgov.org)  
(434) 432-7974

**PITTSYLVANIA**  
COUNTY, VIRGINIA