

An aerial photograph of a large body of water, likely a reservoir or lake, with several houses and docks visible along the shoreline. The water is calm, reflecting the sky and the surrounding greenery. The houses are scattered along the shore, some with docks extending into the water. The trees are lush and green, indicating a warm season.

Housing Summit 2022

Pittsylvania County, VA

Community Development



Building
Inspections



Zoning



Planning

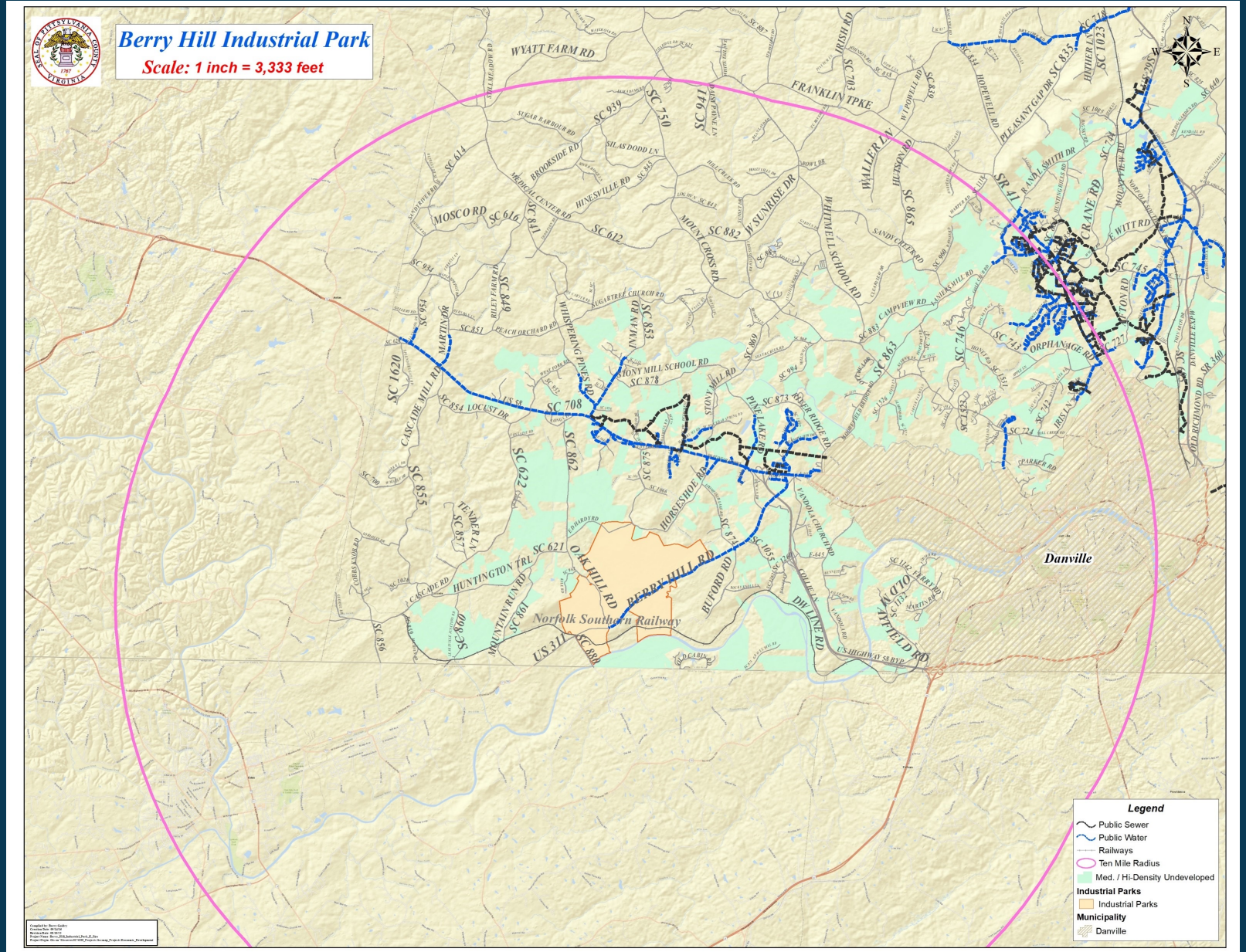
Pittsylvania County

- Population: 60,501
- Population per square mile:
62.4
- Housing Units: 29,408
- Households, 2016-2020:
26,205

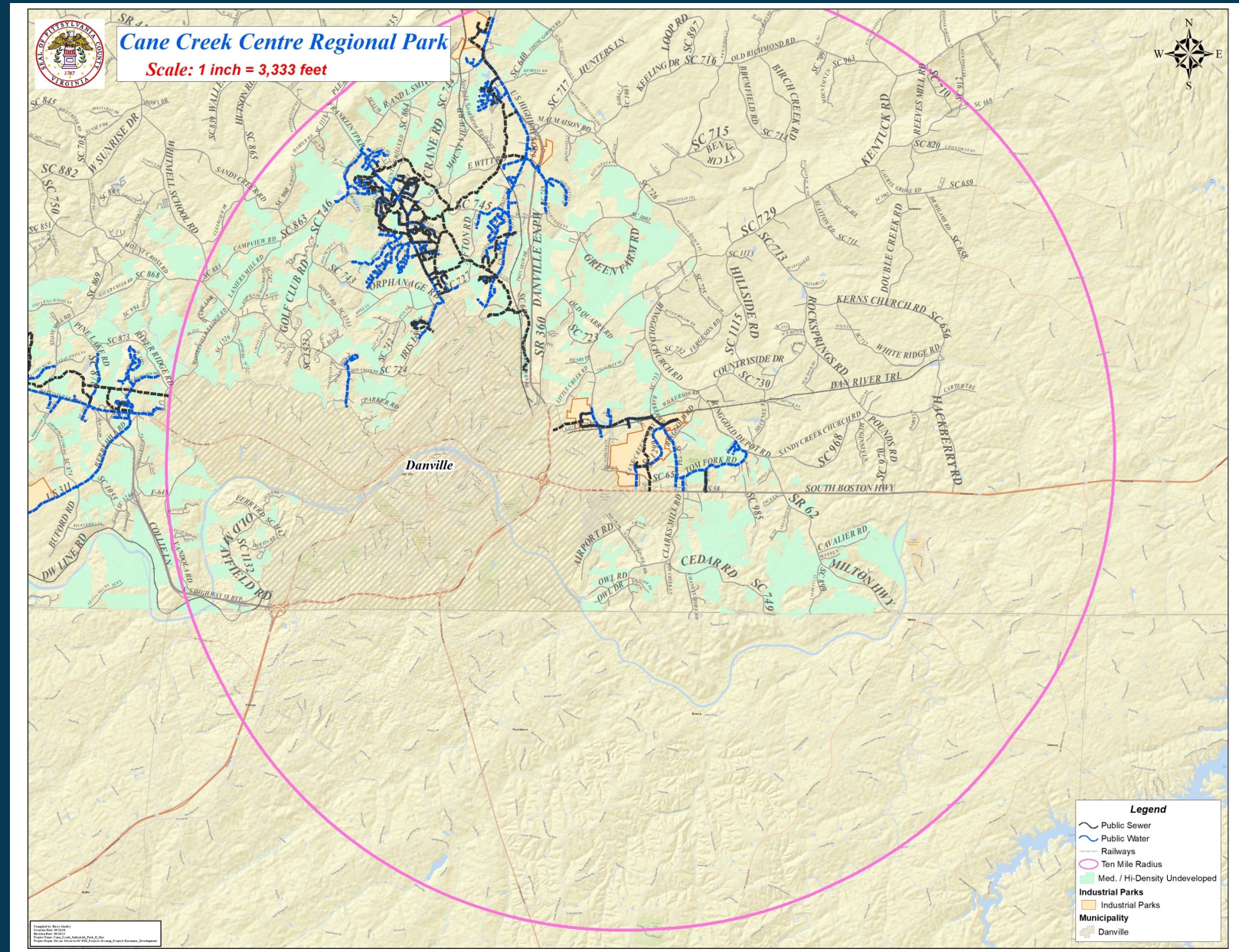


Potential Future Development Areas

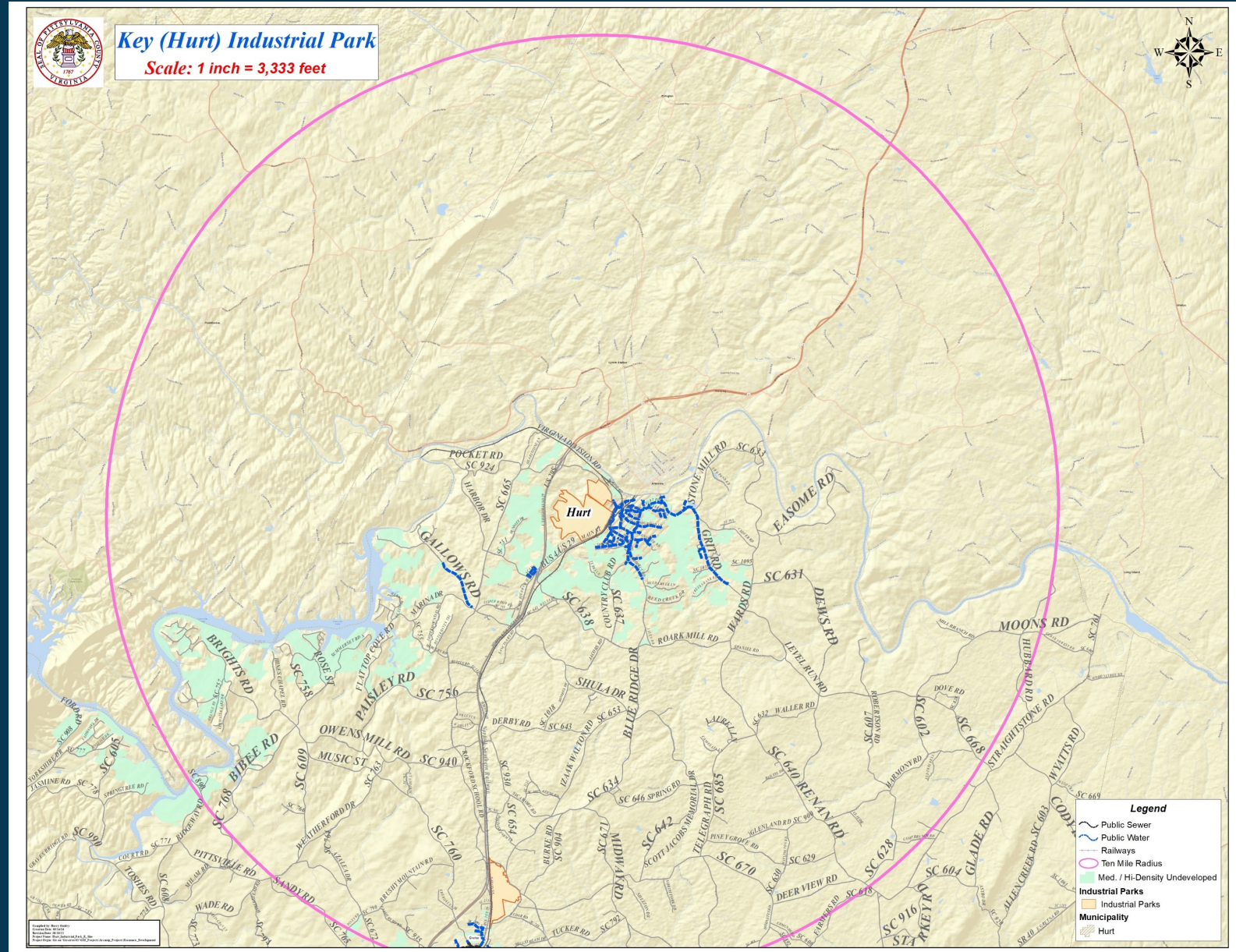
Berry Hill MegaSite



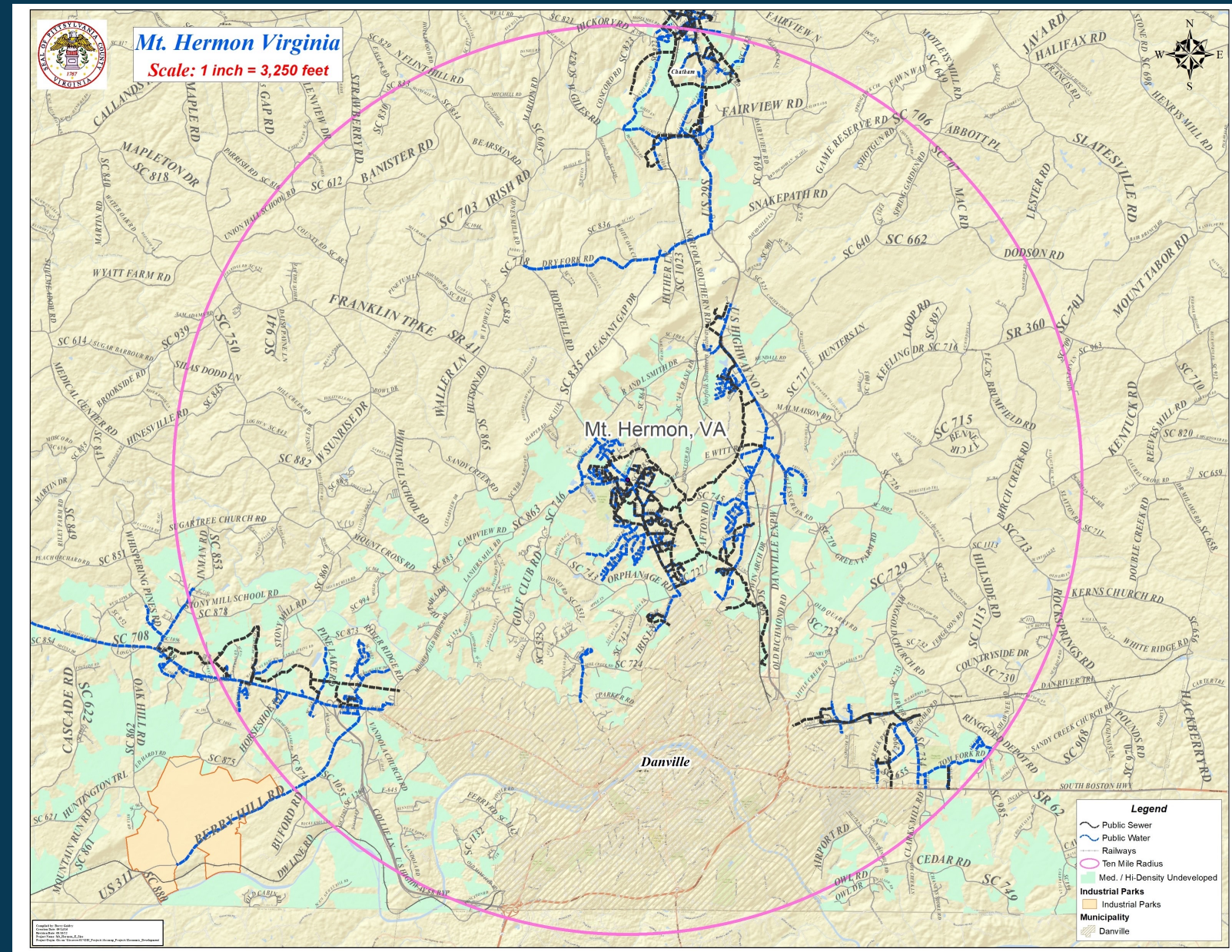
Cane Creek Industrial Park



Hurt Industrial Park



Mount Hermon Community



An aerial photograph of a large lake with several houses and docks along the shoreline. The water is calm, reflecting the sky and the surrounding greenery. The houses are mostly two-story structures with light-colored roofs. The trees are lush and green, indicating a warm season. The overall scene is peaceful and scenic.

Questions?

Emily Ragsdale
Director of Community Development
Emily.Ragsdale@pittgov.org
(434) 432-7974

PITTSYLVANIA
COUNTY, VIRGINIA